

INSTALLATION INSTRUCTIONS

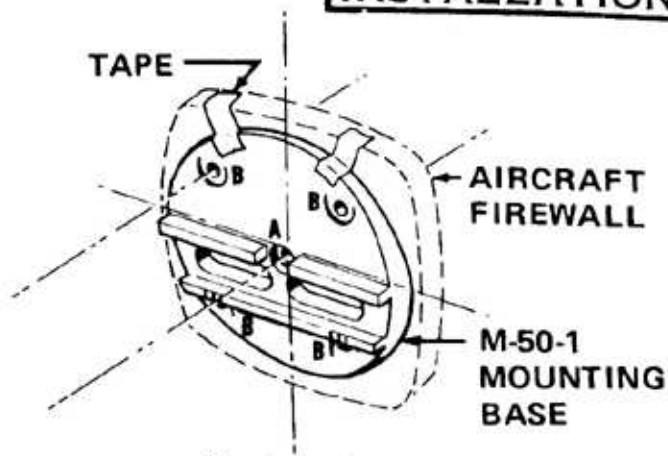


FIG. 1

Drill .250 hole thru center line of firewall using M-50-1 as jig at location "A". Insert dowel thru hole and rotate M-50-1 to desired position and secure with tape. Next drill (4) .156 holes thru locations shown as "B". Remove tape and finish aircraft.

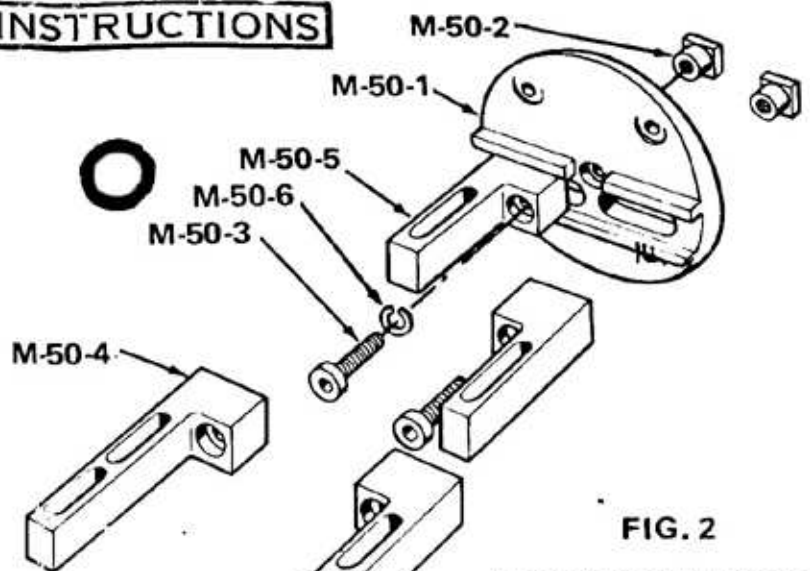


FIG. 2

Assemble as illustrated, using short or long jaws as required. Before tightening M-50-3 bolts adjust jaws, using calibration marks as shown, to help you center your engine

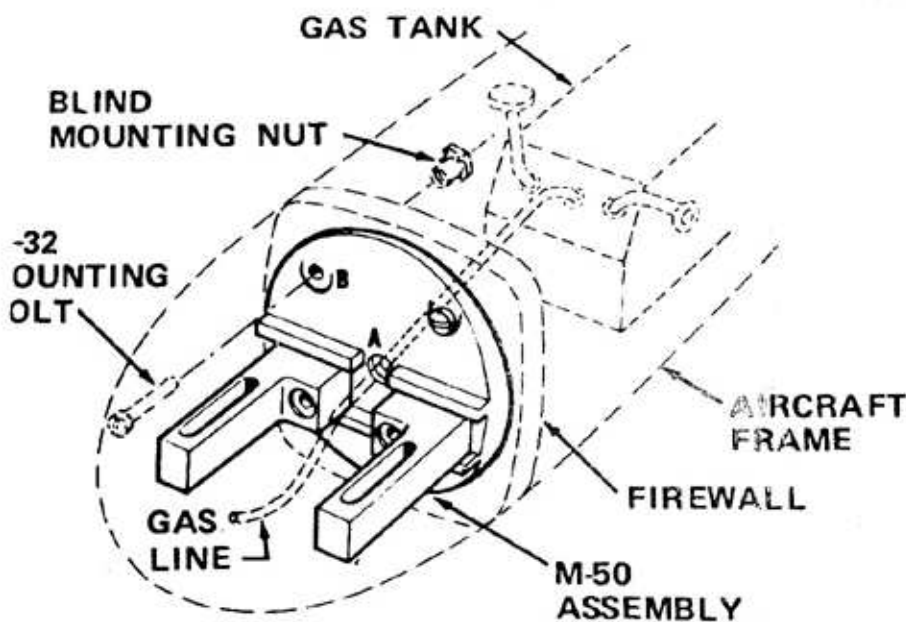


FIG. 3

Place M-50 assembly on firewall and insert (4) .6-32 mounting bolts thru three holes (C) and secure with blind mounting nuts. Next, pass gas line thru hole (A) as illustrated.

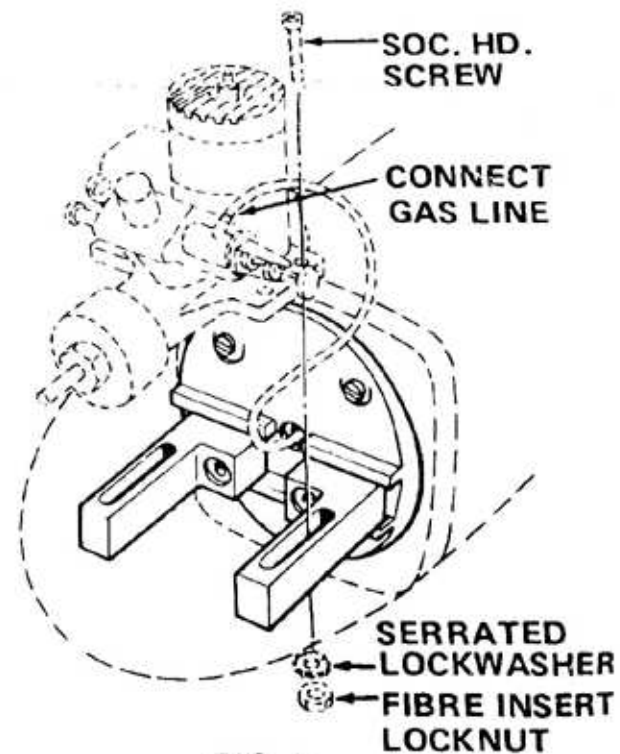


FIG. 4

Place aircraft engine on M-50 jaws and adjust for desired position. Secure with EDSON hardware and connect gas line.